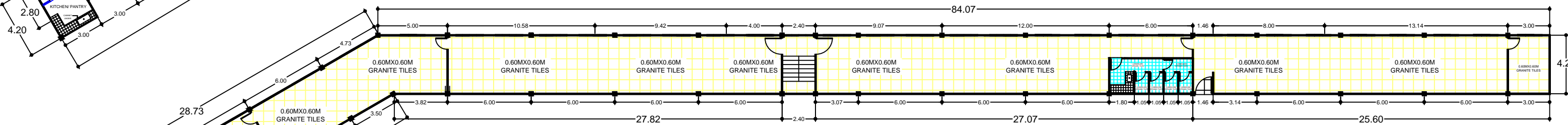


**FLOOR PLAN**  
ILOILO SPORTS COMPLEX  
AREA = 473.63 SQ.M

- LEGEND:**
- MASONRY WALL
  - DRY WALL
  - GLASS WALL
  - PARTITION WALL/CUBICLE



**FLOOR TILE LAY-OUT**



Project Title:  
**REPAIR OF DA-PRDP PSO VISAYAS  
CLUSTER OFFICE (ILOILO)**  
LOCATION: ILOILO SPORTS COMPLEX, LAPAZ ILOILO CITY

Prepared By:  
**ENGR. ANTONIO RONEL T. TRINO**  
I-BUILD COMPONENT HEAD

Noted By:  
**ENGR. JOSE ALBERT A. BARROGO**  
DEPUTY PROJECT DIRECTOR

Approved By:  
**ENGR. REMELYN R. RECOTER MNSA, CESO-III**  
PROJECT DIRECTOR

Sheet No.  
**1/10**