



Item no. 1  
**Boat shape conference table**



Item no. 2  
**L-shape executive table**

*Note: All photos shown are for reference only.  
Supplier shall coordinate with the End-User for approval of design of furniture.*



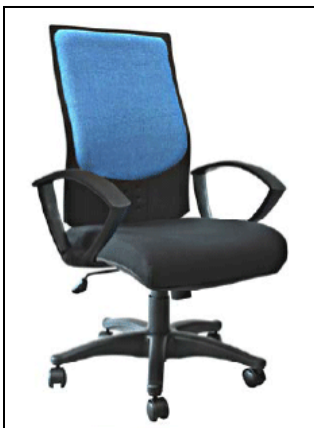
Item no. 3 / 4  
**Rectangular table A / B**



Item no. 5  
**Center table**



Item no. 6  
**Side table**



Item no. 7  
**High-back office chair w/ armrest (Executive)**



Item no. 8  
**Mid-back office chair w/ armrest**



Item no. 9  
**Low-back office chair w/ armrest**

*Note: All photos shown are for reference only.  
Supplier shall coordinate with the End-User for approval of design of furniture.*



Item no. 10  
**Low-back office chair  
without armrest**



Item no. 11  
**Hydraulic stool**



Item no. 12  
**L-shape sofa without armrest**

*Note: All photos shown are for reference only.  
Supplier shall coordinate with the End-User for approval of design of furniture.*



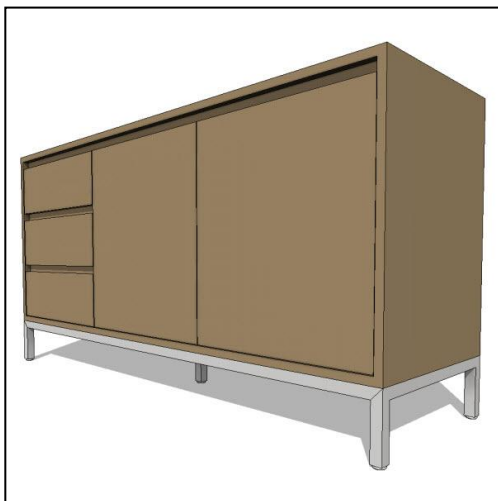
Item no. 13  
**3-seater sofa with armrest**



Item no. 14  
**2-seater sofa with armrest**



Item no. 15  
**Single-seater sofa with armrest**



Item no. 16  
**Console cabinet**

*Note: All photos shown are for reference only.  
Supplier shall coordinate with the End-User for approval of design of furniture.*



Item no. 17  
**Upright steel cabinets set**  
**- Top cabinet**



Item no. 17  
**Upright steel cabinets set**  
**- Bottom cabinet**

*Note: All photos shown are for reference only.  
Supplier shall coordinate with the End-User for approval of design of furniture.*



Item no. 18  
**Lateral file drawer cabinet**



Item no. 19 / 20  
**Mobile pedestal drawer cabinet (Type 1 & 2)**

*Note: All photos shown are for reference only.  
Supplier shall coordinate with the End-User for approval of design of furniture.*